

NAPOLEON®

FIREPLACES | GRILLS | HVAC | OUTDOOR LIVING

WHAT'S NEW
2014





THE STORY

It all started in a small garage just outside Barrie, Ontario, Canada, where Wolfgang Schroeter, trained in a German technical engineering school, built three wood stoves his first year while his wife and partner, Ingrid, would bring home the metal needed on the roof of her car. At that time, no one could imagine the incredible future that lay ahead for Wolf Steel Ltd. and eventually Napoleon Fireplaces, Napoleon Gourmet Grills and Napoleon Heating & Cooling.

By 1981, the name "Napoleon" was born. Over the years, the demand for Napoleon products grew beyond Ontario's borders to the rest of Canada and eventually into the United States, United Kingdom, Europe and Asia. Napoleon is an ISO9001 - 2008 registered company and now operates with over 1,000,000 square feet of manufacturing and distribution space and employs over 700 associates.

Wolf Steel's ownership now reflects two generations of the Schroeter family's high standards of quality, performance and commitment to pursuing cutting edge design and providing consumers with true 'value' they expect for their investment. Each family member is involved in the day-to-day functions of all operations. The high degree of continuity and stability guaranteed by the Schroeter family, combined with an uncompromising customer focus, innovative strength and highly regarded branding, are responsible for this success.



Adding a 270,000 sq. ft. advanced logistics centre for **optimal customer service.**

Completion Date: October 2013

HD4 Series
Log Burner



HD4 Series
Linear Glass Burner



HD4 Series
Designer Fire Cradle



HD4 SERIES

Introducing a new clean face multi-view fireplace series, perfect for making an exceptional focal point between two rooms. Napoleon's new HD4 clean face multi-view direct vent gas fireplace is available as a two-sided (See Thru) or a three-sided (Peninsula) model and features various firebox/burner options including a log burner, a linear glass burner or a designer fire cradle featuring topaz glass embers to match any room in your home.

- Fixed rate at 30,000 BTU's (optional modulation / remote control kit)
- Massive 1,000 sq. in. viewing area
- Electronic ignition with battery back-up
- Natural gas (propane conversion kit available)
- Designer fire cradle complete with topaz glass embers (HD4STFC & HD4PFC)
- Log burner or a linear glass burner (HD4ST, HD4P, HD4STG & HD4PG)
- Brick lined log support comes standard with log burner (HD4ST & HD4P)
- Optional Newport™ panels or MIRRO-FLAME™ Porcelain Reflective Radiant Panels
- Optional river rock media kits available in grey or multi-coloured finishes to switch out the standard topaz glass embers in the designer fire cradle
- Optional zen modern door kit with operable doors in gun metal grey and textured black finishes
- Optional contemporary rectangular front in gun metal grey and porcelain black finishes
- Optional three piece trim kit in black for the See Thru model
- Optional seven piece trim kit in black for the Peninsula model
- Optional safety screen





S1 Wood Stove



S4 Wood Stove



S9 Wood Stove


S - SERIES

THREE SIZES TO SUIT ANY NEED

The S1, S4 & S9 are part of Napoleon's new contemporary EPA approved wood burning stove series complete with a modern cast iron door and pedestal base in a metallic charcoal finish. The S1, S4 & S9 feature a slide out ash drawer with a removable ash pan and lid for easy cleaning. The series also features a "secure lock" lever action door handle (with a removable handle shield) that remains in a convenient open position when the door is open making refueling safe and easy.

- S1 - up to 55,000 BTU's, S4 - up to 70,000 BTU's & S9 - up to 85,000 BTU's
- Removable stainless steel floating secondary air manifold
- Hidden hinges and extra large glass viewing area
- Contemporary EPA wood stove complete with contemporary cast door and cast pedestal base
- Precision slide out ash drawer with removable ash pan complete with lid
- "Secure lock" lever action door handle remains in a convenient up position while re-loading fuel
- Removable handle sleeve for added safety
- Convenient holder for handle sleeve located in slide out ash drawer
- Heavy duty 5/16" firebox top
- Vortex[™] combustion system
- Ceramic fiber baffle system
- Optional door accent trim in satin chrome plated finish
- Metallic charcoal finish
- The S - Series comes complete, ready for installation





EPI31 shown with removable
painted black log retainer

EPI3 FLUSH MOUNT WOOD INSERT

The EPI3T has a traditional flush front with a cast iron surround and the EPI3C has a contemporary flush front with a cast iron surround. Four stainless steel secondary air tubes supercharge the fuel burning process and generate a beautiful display of YELLOW DANCING FLAMES®. Complete with a removable painted black log retainer and a heat circulating blower, both the EPI3T & EPI3C are perfect heating solutions for your home or cottage.

- Up to 55,000 BTU's and heats up to 1,500 sq. ft.
- EPA certified to be one of the cleanest burning wood inserts available at 2.6 grams per hour
- Largest ceramic glass viewing area in the industry, 300 sq. in.
- Full refractory lined firebox - 1.8 cu. ft.
- Advanced airwash system keeps the viewing glass clean
- Rear rollers and oversized levelling screws make the insert easy to install
- Removable painted black log retainer for easy cleaning
- Removable one piece high density vermiculite baffle allows easy access for chimney cleaning and maintenance
- Safety door switch turns blower off when opening the door
- Heat activated thermal switch for reliable carefree blower performance
- 6" flue collar is detachable from outside or inside the firebox and adjustable to 30° offset with a built-in handle for easy and quick installs



EPI3C



ELECTRIC SLIMLINE FIREPLACE SERIES

Introducing a linear electric slimline fireplace series with a clean, crisp contemporary design and all the conveniences of simply hanging, plugging in and enjoying. Napoleon's new electric fireplaces feature a generous glass front and a contemporary glass ember bed that complements the minimalist design. All units can be recessed into the wall for reduced protrusion into the room. Five widths are available – 32", 48", 60", 72", 100" plus a 32" convex model.

- 5,000 BTU's (excluding the EFL100)
- 1,500 Watts (excluding the EFL100)
- Plugs into a standard 120V electrical outlet
- Designed for either wall mount (4") or recessed installation (1 ½")
- Electronic touch screen control panel (excluding the EFC32H)
- Easily hangs on the wall with a built-in bracket
- Convenient on/off remote adjusts 3 settings of both heat output and flame intensity, thermostatic control and timer
- Includes paintable cord cover
- LED bulbs will not burn out
- Ability to hard wire directly to household electrical
- Suitable for any room including bathrooms, bedrooms, bed sitting rooms and mobile homes

LOW ENERGY
LED
TECHNOLOGY



EFC32H



the art of fire
Available Now!

GL22/28/32 REVERSIBLE GAS LOGS

Napoleon's new Gas Log Sets (GL22/GL28/GL32) feature reversible PHAZER® Logs, glowing embers and charcoal lumps giving Napoleon's gas log sets the look of a real wood burning fireplace, without the hassle of real wood. The reversible logs can be configured to taste for an authentic looking Split-Wood fire or a natural looking Tree Bark appearance.

- 70,000 BTU's (GL22), 80,000 BTU's (GL28) & 90,000 BTU's (GL32)
- All components packaged in **ONE BOX** for convenient shipping & inventory
- Reversible PHAZER® logs – two log sets in one
- Adjustable wrought iron grate
- Electronic ignition
- Hidden, easy access controls with switch
- Optional remote control or remote control kit





GSS48 & GSS48ST

OUTDOOR LINEAR GAS FIREPLACE

A truly unique outdoor fireplace with a linear, sleek contemporary design adding to the excitement of outdoor living. Napoleon's outdoor linear gas fireplace is constructed of weather resistant brushed stainless steel for maximum outdoor durability. They feature a glass wind deflector (two with two-sided unit) to ensure operation in windy conditions plus a safety valve that turns the gas supply off if the flame goes out. The glass wind deflector(s) is accented with an LED light strip that transitions through the RGB (red, green and blue) colour spectrum to create an eye-catching effect. With these features plus the option of either a one-sided or a two-sided (See Thru) unit, the outdoor linear gas fireplace is the perfect addition to any backyard oasis.

- 55,000 BTU's
- Electronic ignition
- Topaz CRYSTALINE™ ember bed
- All commercial grade 304 stainless steel enclosure
- Tempered glass wind deflector(s) for improved operation in windy conditions (GSS48ST comes with two, one for each side)
- LED light strip (on both sides of See Thru) transition between colours or can be set to the colour of your choice including white, accenting the glass wind deflector(s)
- Optional river rock & glass ember media kits
- Optional stainless steel weather cover (two needed for See Thru)
- Optional four-sided stainless steel trim
- Five year limited warranty



GSS48 shown with four-sided stainless steel trim



PATIOFLAME® WIND DEFLECTOR

Glass wind deflectors are now available for Napoleon's linear Patioflame®. Sitting around your linear Patioflame® on a windy night will no longer be a problem, the optional wind deflectors reduce the effect the wind has on the flame so you can enjoy your backyard oasis even on windy nights!

- Tempered glass wind deflector(s) (four pieces total)
- Chrome plated aluminium corner pieces join the four pieces together
- Dimensions: 16"w x 50"l x 5"h
- Stainless steel cover can be used in conjunction with the deflectors
- Magnetic feet secure the deflector to the unit



Pati@flame



FIREBOWL FIREPIT & BBQ TABLE

Features easy installation and can be conveniently transported to the cottage, marina, camping... Anywhere!

- Wood & charcoal burner
- Porcelainized firebowl
- Wood burning bowl is removable - making removal of ashes more convenient
- Dimensions (not including cooking grid):
29"w x 29"l x 18"h
- Safe for children, the side panels don't get hot and the firebowl is hidden under the table surface
- Optional adjustable cooking grid - cooking surface can be raised, lowered or swiveled, food can be removed from heat when finished
- Optional spark screen





PRO22CK-LEG

PRO22CK-LEG CHARCOAL KETTLE

Nothing beats the rich smoky taste of charcoal and the nostalgia that comes along with it. Napoleon® has taken this classic grilling technique to a whole new level with the Professional Charcoal Kettle.

- 22 ½" diameter porcelain lid and bowl
- Heavy duty cast iron hinged cooking grids with three height adjustments
- Exclusive offset hinged lid for safe operation over the entire cooking surface
- ACCU-PROBE™ temperature gauge and stainless steel precision air vent visible from the exterior
- Heavy gauge black porcelain lid and bowl
- Stainless steel heat diffuser for even heat distribution
- Easily removable high capacity heavy steel ash catcher
- Powder coated, robust steel bottom shelf
- Large weather proof, two-piece wheels with rubber tread



AS200K APOLLO®

The innovative Napoleon® AS300K, 3 in 1 smoker grill introduces a little brother, the AS200K. A smaller, more compact version with all the power you need for wet and dry smoking, or use it as a stand alone charcoal grill with lid.

- 248 sq. in. of cooking area and a 16" cooking grate in each cooking chamber
- Hinged, tightly fitting doors with easy access to the water pan and charcoal baskets
- Two access doors provide little heat loss compared to one large door
- Sturdy lid handle
- Upper lid contains a horizontal bar with 5 hooks for hanging fish, ribs or sausages
- Temperature eyelets at each grill level provide access for inserting a thermometer probe
- Multiple vents for excellent temperature control



AS200K



AS200K

AS300K





OD-KSM100 KITCHEN MODULE

Bring all the convenience of your kitchen outdoors with Napoleon's new kitchen module. It's perfect for all your food preparation and clean up needs. Now you can really give your kitchen a break with the convenience of added counter space, storage space and functioning sink.

- Configures with Mirage™ and LE Series models
- Stainless steel sink and faucet
- Storage shelf along the entire front
- Convenient sink and under cabinet storage
- Stainless steel silver powder coated construction
- Comes with two sets of handles; black and chrome plated for your design choice





GRILLING ACCESSORIES

Napoleon's Canadian designers have developed a world of innovative, creative and easy to use grilling accessories that are exclusive, trademarked designs manufactured in our own facilities and are not available through other companies. Experience exciting new tools such as pizza stones, digital thermometers and professional chef sets. It's a true passion for grilling that has inspired these new tools, including a professional quality PRO Series.

Napoleon® has rebranded the consumer grill accessory packaging for a more vibrant eye catching design that truly enhances the brand and the product. Guaranteed to make a striking impression on display.

Visit napoleongrills.com to see Napoleon's complete line of grilling accessories.



Professional Cutting Board Set
70012



Smoker Pipe
67011



Stainless Steel Rib & Roast Rack
70009



Gourmet Chef Set
70002



Professional Grill Topper
70023



Wireless Thermometer
70006



Cast Iron Reversible Griddles
56040/56060



Heat Resistant Gloves
62140



9200 SERIES

AN INDUSTRY FIRST - 30,000 BTU'S

Models starting as low as 30,000 BTU's up to 120,000 BTU's and up to 94% AFUE. 'Greener' high performance homes are a growing demand and Napoleon's small capacity furnaces optimize efficiency and comfort.

- The Only Gas Furnaces Made in Canada
- The lowest BTU furnace on the market with a 30,000 BTU input up to 120,000 BTU's
- Shortest 92.1% AFUE furnace on the market with 32 7/8" height, four cabinet width sizes and three position installation
- Contains LED service indicator lights to ensure quick and accurate service diagnosis
- Simple conversion to propane
- Interior condensate trap for left or right drainage options
- Clear condensate collector to view furnace performance
- Aluminized Vortex™ high efficiency triple-pass tubular primary heat exchanger with wrinkle-bend technology
- Stainless steel secondary heat recovery coil and aluminized multi-port in shot burners



HMF150 & 200

NOW CENTRAL A/C ADAPTABLE

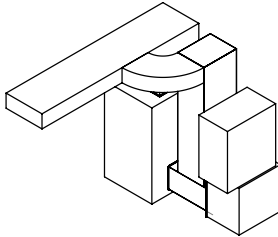
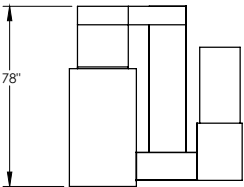
Green technology and fuel saving capabilities are at the heart of the Hybrid Series multi-fuel furnaces and they just keep getting better. The HMF150 and HMF200 are back with more improvements and are now both Central A/C adaptable.

HMF150 FEATURES

- 88.6% maximum efficiency with emissions of 3.4 grams per hour
- Firebox capable of handling 24" long wood
- 3.4 cu. ft. firebox capacity
- Maximum output capacity of 132,000 BTU's and average output of 85,000 BTU's
- President's Limited Lifetime Warranty

HMF200 FEATURES

- 85% maximum efficiency with emissions of 4.5 grams per hour
- Firebox capable of handling 30" long wood
- 5 cu. ft. firebox capacity
- Maximum output capacity of 170,000 BTU's and average output of 95,000 - 110,000 BTU's
- President's Limited Lifetime Warranty



DUCTLESS A/C UNITS

Napoleon Heating & Cooling introduces a new line of ductless air conditioners. Improved product features, increased SEER ratings and clean design are what it's all about and they are all backed by outstanding limited warranties.



16 SEER INVERTER HEAT PUMP CONDENSER

- Up to 27,000 BTU condenser heating and cooling capacity
- Operates up to three indoor heads:
9,000, 12,000 and 18,000 BTU capacities with DC inverters



15 SEER INVERTER A/C ONLY

- 9,000, 12,000, 18,000 and 24,000 BTU's of cooling capacity
- Fahrenheit or Celsius display
- DC Inverter



19 SEER INVERTER HEAT PUMP

- 9,000, 12,000, 18,000 and 24,000 BTU heating and cooling capacity
- Fahrenheit or Celsius display
- DC Inverter



WHY NAPOLEON?

With over 36 years of passionate dedication, Napoleon®, an industry leader for innovative designs, has earned a worldwide reputation for providing families with fireplaces, grills and heating & cooling equipment of uncompromising quality, state-of-the-art technology and designer features that create a proud statement in any home.

As the largest family owned hearth & grill manufacturer in North America, Napoleon® holds strong family values that carry through in every aspect of the organization. Since 1976, Napoleon® has grown from a small manufacturing operation to a large private corporation, instilling the same strong values they started with.

Napoleon® partners with over 4,000 reputable authorized dealers across North America and Europe, providing professional training, experienced technical support and unparalleled customer service.

Each and every Napoleon® fireplace is designed and manufactured to strict quality testing standards and backed by the President's Limited Lifetime Warranty, guaranteed to give you the solid performance you deserve. (Registered under the world recognized ISO 9001-2008)

Napoleon® products are found in homes around the globe... the preferred choice worldwide.





napoleonproducts.com

